

Supplementary Materials

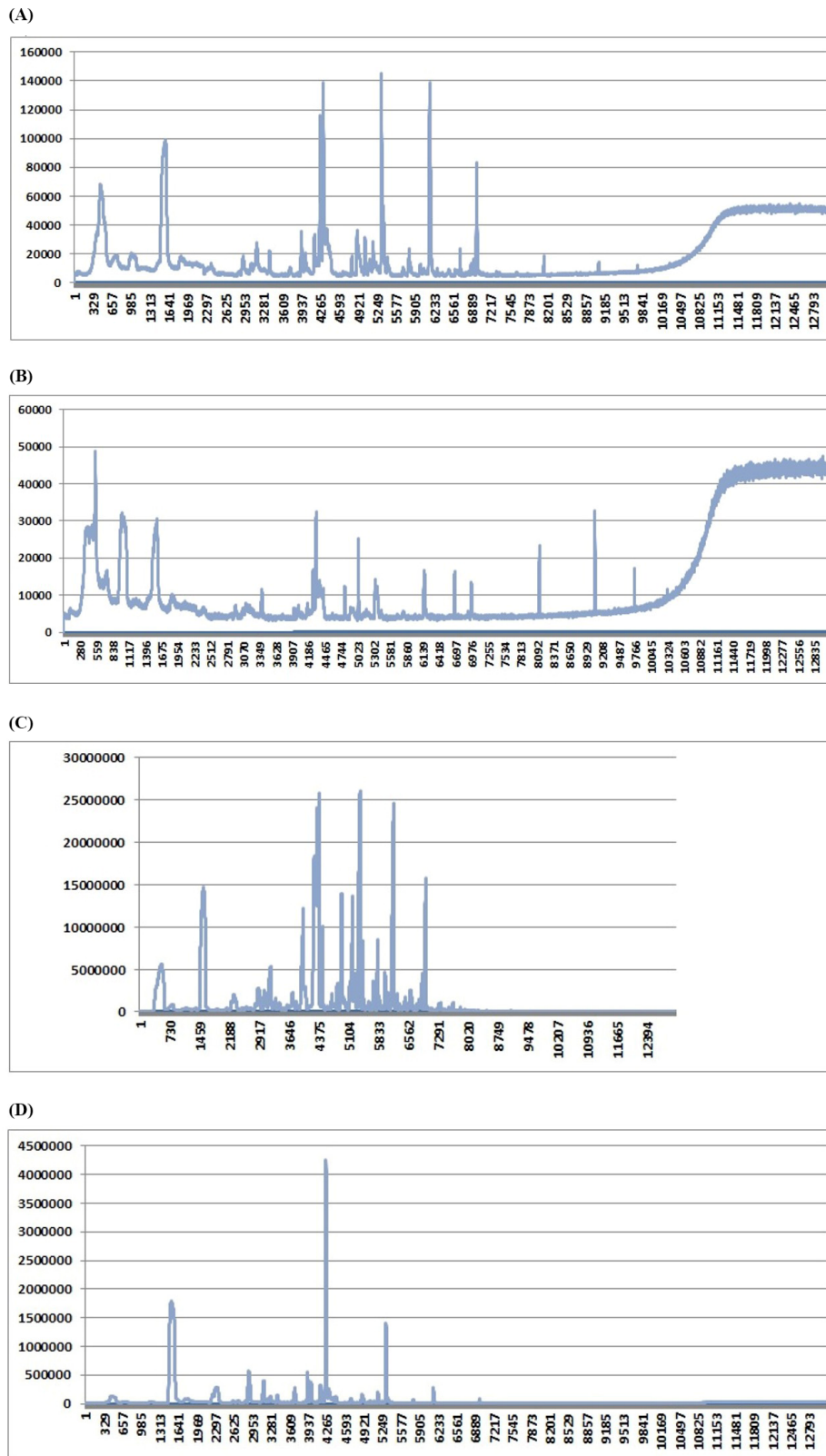


Fig. S1. Total ions chromatogram of GC-MS data. (A) Total ion chromatogram of fresh duck eggs. (B) Total ion chromatogram of salted duck eggs control. (C) Total ion chromatogram of LS. (D) Total ion chromatogram of salted eggs supplemented with 2.5% LS. LS, liquid smoke.

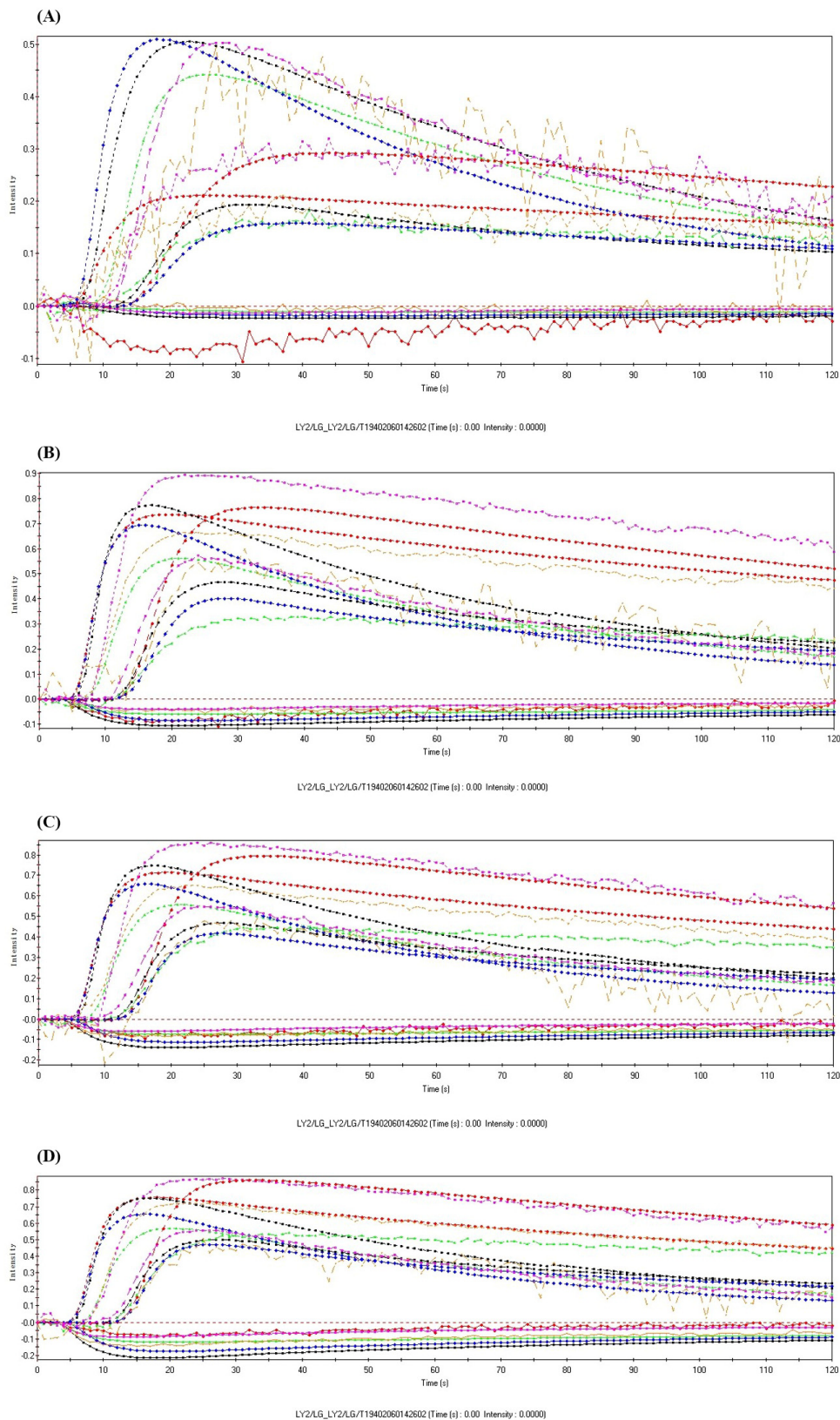


Fig. S2. E-nose data of volatile compounds of salted eggs. (A) E-nose sensor intensity for volatile compounds of fresh duck egg. (B) E-nose sensor intensity for volatile compounds of salted duck egg control. (C) E-nose sensor intensity for volatile compounds of salted eggs supplementation of LS 2.5%, v/v. (D) E-nose sensor intensity for volatile compounds of salted eggs supplementation of LS 5%, v/v. LS, liquid smoke.