



ARTICLE

## Nuclear Magnetic Resonance (NMR)-Based Quantification on Flavor-Active and Bioactive Compounds and Application for Distinguishment of Chicken Breeds

Hyun Cheol Kim<sup>1</sup>, Dong-Gyun Yim<sup>1</sup>, Ji Won Kim<sup>1</sup>, Dongheon Lee<sup>1</sup>, and Cheorun Jo<sup>1,2,\*</sup>

OPEN ACCESS

Received December 17, 2020

Revised December 24, 2020

Accepted December 28, 2020

<sup>1</sup>Department of Agricultural Biotechnology, Center for Food and Bioconvergence, and Research Institute of Agriculture and Life Science, Seoul National University, Seoul 08826, Korea

<sup>2</sup>Institute of Green Bio Science and Technology, Seoul National University, Pyeongchang 25354, Korea

\*Corresponding author : Cheorun Jo  
Department of Agricultural Biotechnology,  
Center for Food and Bioconvergence, and  
Research Institute of Agriculture and Life  
Science, Seoul National University, Seoul  
08826, Korea  
Tel: +82-2-873-2271  
Fax: +82-2-873-2271  
E-mail: [cheorun@snu.ac.kr](mailto:cheorun@snu.ac.kr)

\*ORCID  
Hyun Cheol Kim  
<https://orcid.org/0000-0002-9445-7516>  
Dong-Gyun Yim  
<https://orcid.org/0000-0003-0368-2847>  
Ji Won Kim  
<https://orcid.org/0000-0001-8934-4771>  
Dongheon Lee  
<https://orcid.org/0000-0002-6214-9295>  
Cheorun Jo  
<https://orcid.org/0000-0003-2109-3798>

**Abstract** The purpose of this study was to use <sup>1</sup>H nuclear magnetic resonance (<sup>1</sup>H NMR) to quantify taste-active and bioactive compounds in chicken breasts and thighs from Korean native chicken (KNC) [newly developed KNCs (KNC-A, -C, and -D) and commercial KNC-H] and white-semi broiler (WSB) used in *Samgye*. Further, each breed was differentiated using multivariate analyses, including a machine learning algorithm designed to use metabolic information from each type of chicken obtained using <sup>1</sup>H-<sup>13</sup>C heteronuclear single quantum coherence (2D NMR). Breast meat from KNC-D chickens were superior to those of conventional KNC-H and WSB chickens in terms of both taste-active and bioactive compounds. In the multivariate analysis, meat portions (breast and thigh) and chicken breeds (KNCs and WSB) could be clearly distinguished based on the outcomes of the principal component analysis and partial least square-discriminant analysis ( $R^2=0.945$ ;  $Q^2=0.901$ ). Based on this, we determined the receiver operating characteristic (ROC) curve for each of these components. AUC analysis identified 10 features which could be consistently applied to distinguish between all KNCs and WSB chickens in both breast (0.988) and thigh (1.000) meat without error. Here, both <sup>1</sup>H NMR and 2D NMR could successfully quantify various target metabolites which could be used to distinguish between different chicken breeds based on their metabolic profile.

**Keywords** Korean native chicken, metabolomics, quantitative nuclear magnetic resonance (qNMR), <sup>1</sup>H-<sup>13</sup>C heteronuclear single quantum coherence (HSQC), white semi-broiler

## Introduction

*Samgyetang* and *Baeksuk* are traditional Korean soups that are prepared using whole juvenile chickens filled with garlic, glutinous rice, jujube, and ginseng to combat the

detrimental effects of the summer heat (Jayasena et al., 2013). Considering its short and concentrated seasonal demand, *Samgye* is generally prepared and distributed using meat from white semi-broiler (WSB) chickens, which are crossbred using a male broiler and female laying hen (Jeong et al., 2020). WSB is characterized by their white feathers, smaller size, and reduced fat and account for 60% to 70% of the *Samgyetang* market (Cho et al., 2007). This commercial dominance is attributed to aspects of WSB like a cheaper price, higher stability during high-temperature processing, and a chewy texture compared to commercial broiler (Park et al., 2011). However, this is an unofficial breed raised by private industries and several safety issues have recently been put forth regarding its production process (Jeong et al., 2020). Korean native chicken (KNC), is a slow-growing breed and is known for possessing lower fat content and a firmer texture than WSB and commercial broiler chickens (Jeon et al., 2010). KNC also has a unique flavor and a chewier texture when compared to commercial breeds and are known to contain higher concentrations of amino acids and inosinic acid, contributing to their umami taste (Jayasena et al., 2013; Jayasena et al., 2015b). The complex flavors of KNC can result from the combination of various inherent compounds including arachidonic acid (C20:4), glutamic acid, inosine 5'-monophosphate (IMP), and endogenous bioactive compounds such as anserine, creatine, and carnosine (Jayasena et al., 2013; Jayasena et al., 2014a; Jayasena et al., 2015b; Jung et al., 2013). These dipeptides are known to possess antioxidative, antiaging, pH-buffering effects, and closely related to energy metabolism (Lee et al., 2015).

While metabolomic analyses are generally used to explain changes in the physicochemical properties of various meat products and rely on various chemometric analyses (Kim et al., 2020a; Kim et al., 2020b; Simmler et al., 2014), there has been an increase in the number of nuclear magnetic resonance (NMR)-based studies used to evaluate the metabolic profile of these meat samples without evaluating the chemical characteristics of the target metabolites (Simmler et al., 2014). NMR-based analysis combined with multivariate analysis was used to understand and/or to elucidate metabolic changes of meat samples (Kim et al., 2020a; Kim et al., 2020b). Several studies have used NMR-based analysis of meat samples to determine their metabolic profiles, and many of these profiles have been used to differentiate meat samples based on breed, age, geographical origin, and metabolic fingerprint as determined by one-dimensional  $^1\text{H}$  NMR (1D  $^1\text{H}$  NMR) analysis (Beauclercq et al., 2016; Jung et al., 2010; Kodani et al., 2017; Straadt et al., 2014). However, 1D  $^1\text{H}$  NMR analysis may not reveal all the differences in the metabolic profiles as there may be chronic overlap in the obtained data (Kim et al., 2020a). To overcome this limitation, many studies have opted to include two-dimensional NMR (2D NMR) to solve the issue of overlapping via dimensional expansion (Kim et al., 2020b). 2D NMR qualifies and easily quantifies the specific peak exhibited by various metabolites which can then be used to evaluate quality-related metabolites and breed authenticity when used in conjunction with machine learning algorithms (Dass et al., 2017). Machine learning algorithms allow researchers to use the complex data obtained from various chemometric analyses to rapidly classify samples into specific groups without generating experimental bias (Jiménez-Carvelo et al., 2019).

The objective of this study was to evaluate and quantify differences in the taste-active and bioactive compounds in different breeds of chicken and to determine if these values could be applied to a machine learning algorithm and used to distinguish between different breeds of chicken, KNCs (-A, -C, -D, and -H) and WSB, based on metabolic differences in their breast and thigh meat.

## Materials and Methods

### Reagents

Deuterium oxide ( $\text{D}_2\text{O}$ ),  $\text{D}_2\text{O}$  with 3-(trimethylsilyl)propionic acid-2,2,3,3- $d_4$  (TSP) sodium salt, and mono- and di-

phosphate sodium salts (anhydrous form) were purchased from Sigma-Aldrich (St. Louis, MO, USA). Potassium hydroxide was purchased from Daejung Chemicals & Metals (Siheung, Korea).

### Sample preparation

KNCs [newly developed KNCs (KNC-A, -C, and -D) and commercial KNC-H] and WSB were raised under the same conditions for 5 wk at a pilot-scale farm (Gimje, Korea). All chickens were raised across 15 pens (25 chickens/pen) within a single house and food and water were provided *ad libitum* throughout the entire experimental period. After 5 wks, the chickens were transferred to a slaughterhouse (Iksan, Korea) and held in lairage overnight. The slaughter process then proceeded automatically. Chickens were stunned in an electrical water bath, de-feathered, eviscerated, and air-chilled. Eight chicken carcasses (2 chickens/pen) of similar size ( $800\pm 50$  g) were randomly selected and deboned, vacuum-packaged, and transferred to the laboratory (Seoul, Korea) using a cooler filled with ice. Eight samples (comprising both breast and thigh meat) were ground using a meat grinder (MG510, Kenwood Appliances, Dongguan, China) and homogenized. Subsequently, three homogenized samples (weighing approximately 100 g each) were then collected, vacuum-packed, and stored at  $-70^{\circ}\text{C}$  for further analysis. All frozen meat samples were thawed at  $4^{\circ}\text{C}$  for 24 h before analysis.

### Polar metabolite extraction

Thawed ground chicken meat (5 g) was homogenized at  $1,720\times g$  for 30 s (T25 basic, Ika, KG, Staufen, Germany) in 0.6 M perchloric acid and then centrifuged (Continent 512R, Hanil, Incheon, Korea) at  $3,086\times g$  for 15 min. The supernatant was transferred into a new test tube and neutralized using potassium hydroxide. Neutralized extracts were centrifuged again under the same conditions and then the supernatant was filtered (Whatman No. 1, Whatman PLC., Brentford, Middx, UK) and lyophilized (Freezer dryer 18, Labco Kansas City, MO, USA) before storing at  $-70^{\circ}\text{C}$  until further use in NMR analysis.

### Reconstitution of meat extracts

These lyophilized extracts were reconstituted using 1 mL of 1 mM TSP  $\text{D}_2\text{O}$  (20 mM phosphate buffer, pH 7.0), placed in a water bath at  $35^{\circ}\text{C}$  for 10 min, and then centrifuged at  $3,086\times g$  for 20 min at  $4^{\circ}\text{C}$ . The supernatants were then transferred into a microcentrifuge tube and centrifuged at  $17,000\times g$  for 10 min. The supernatant (600  $\mu\text{L}$ ) was then transferred into an NMR tube prior to NMR analysis.

### NMR data acquisition

1D  $^1\text{H}$  NMR and  $^1\text{H}$ - $^{13}\text{C}$  heteronuclear single quantum coherence (HSQC) were recorded in  $\text{D}_2\text{O}$  at 298 K using the Bruker 850 MHz cryo-NMR spectrometer (Bruker Biospin GmbH, Rheinstetten, Germany). 1D  $^1\text{H}$  NMR was performed by applying a modified standard zg30 (recycle delay of 1 s) default in Topspin 3.6.2 (Bruker Biospin GmbH). The 1D  $^1\text{H}$  NMR experiment was performed using 64 k data points, a sweep width of 17,007.803 Hz, and 128 scans. The  $^1\text{H}$ - $^{13}\text{C}$  HSQC experimental conditions were as follows: 2 k data points in the  $t_2$  domain and 512 increments in the  $t_1$  over eight scans with a spectral width of 11 ppm for the  $f_2$  dimension and 180 ppm for the  $f_1$  dimension; and a coupling constant value of 145 Hz designed to set delay durations for short-range correlations. After acquisition of data, NMR baseline correction was performed manually and the TSP reference was used to align the spectra obtained from both 1D  $^1\text{H}$  NMR and 2D  $^1\text{H}$ - $^{13}\text{C}$  NMR.

## Metabolite quantification

Metabolite peaks were identified using standard compounds, the human metabolome database (HMDB; hmdb.ca), and the biological magnetic resonance bank (BMRB; bmrwisc.edu). Only peaks with no and/or slight overlap were considered for quantification. Metabolites in the 1D  $^1\text{H}$  NMR analysis were quantified using methods described by Kim et al. (2019). Prior to multivariate comparison, peak intensities in the  $^1\text{H}$ - $^{13}\text{C}$  HSQC data were quantified using AMIX (Analysis of MIXtures software v3.9, Bruker Biospin GmbH) according to the methods described by Kim et al. (2020a).

## Statistical analysis

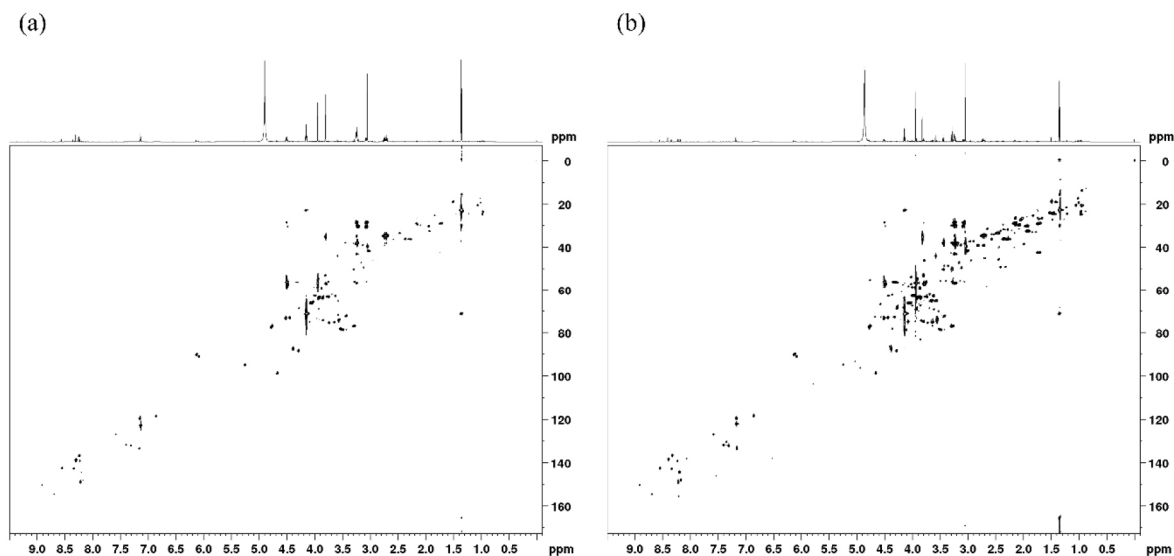
Statistical analysis for taste-active and bioactive compounds was performed using the procedure of the general linear model for comparison of quantified metabolites obtained from 1D  $^1\text{H}$  NMR in each meat portion. Significant differences among the mean values were determined by using Duncan's multiple range test and the SAS software (SAS 9.4, SAS Institute, Cary, NC, USA) with a confidence level of  $p < 0.05$ . All experimental procedures were conducted in triplicate.

A total of 44 integrated metabolite peaks (arbitrary units) from the  $^1\text{H}$ - $^{13}\text{C}$  HSQC dataset were considered for multivariate analysis. Prior to multivariate analyses, the absolute intensities were log-transformed (generalized logarithm transformation) and auto-scaled (mean-centered and divided by the standard deviation of each variable). Datasets [30 (samples)  $\times$  44 (metabolites)] were then analyzed using one-way ANOVA and the Tukey's post hoc test ( $p < 0.05$ ) for comparison of chicken breeds in each meat portion (breast and thigh). Principal component analysis (PCA, R mode), partial least square-discriminant analysis (PLS-DA), and biomarker analysis were performed using Metaboanalyst 4.0 (www.metaboanalyst.ca), and a heatmap analysis of the top 30 metabolites identified using ANOVA was completed using Euclidean distance and Ward's cluster algorithm. Multivariate receiver operating characteristic (ROC) curve analysis was completed using the linear support vector machine (SVM) classification, and its features were ranked based on the SVM built-in ranking method.

## Results and Discussion

### Taste-active and bioactive compound quantification

Taste-active and bioactive compounds in the breast and thigh meat were quantified using 1D  $^1\text{H}$  NMR analysis as numerical quantification of 2D NMR spectra requires standard curves for each compound (Fig. 1; Kim et al., 2020b). The composition and quantity of each of these taste-active and bioactive compounds were observed to be breed-specific (Table 1), with the breast meat from KNC-D demonstrating the highest levels of aspartic acid, glutamic acid, carnosine, creatine, and IMP among meat samples obtained from all breeds ( $p < 0.05$ ). KNC-C had the highest anserine content ( $p < 0.05$ ), while KNC-A demonstrated the lowest quantity of any of the examined flavor-active compounds ( $p < 0.05$ ). Aspartic and glutamic acid are both free amino acids and their presence is markedly associated with the meat flavor, which may be attributed to their synergistic effect with IMP that enhances the umami flavor associated with high-quality meat products (Dashdorj et al., 2015; Jayasena et al., 2014b; Yamaguchi, 1967). The amount of free amino acids in chicken meat could be proportional with growth rate of chicken breed (Ali et al., 2019). Likewise with previous study, the amount of glutamic acid and aspartic acid may present proportionally among KNCs since KNC-A showed the lowest growth rate (Lee et al., 2018). Anserine and carnosine both share a histidine base and are commonly referred to as histidine dipeptides. Anserine is predominantly found in poultry and can be synthesized from carnosine via carnosine *N*-methyltransferase activity (Jung et al., 2013). These histidine dipeptides demonstrate multiple activities including exhibition of bioactive functions and act as taste-active compounds



**Fig. 1.** 1D  $^1\text{H}$  and 2D heteronuclear single quantum coherence (HSQC) NMR spectra from (a) breast and (b) thigh meat extracts on 850 MHz cryo-NMR spectrometer. NMR, nuclear magnetic resonance.

**Table 1.** Taste-active and bioactive compounds (mg/100 g) of breast and thigh meat from white semi-broiler (WSB) and Korean native chicken breeds (A, C, D, and H)

Contents <sup>1)</sup>		Breed					SEM <sup>2)</sup>	Meat portion	
		A	C	D	H	WSB		p-value	F-value
Asp	Breast	9.98 <sup>b</sup>	10.86 <sup>b</sup>	12.88 <sup>a</sup>	12.52 <sup>a</sup>	11.44 <sup>ab</sup>	0.499	<0.0001	188.00
	Thigh	21.33 <sup>ab</sup>	22.98 <sup>a</sup>	19.77 <sup>b</sup>	18.72 <sup>b</sup>	18.66 <sup>b</sup>	0.816		
Glu	Breast	30.44 <sup>c</sup>	35.09 <sup>b</sup>	39.49 <sup>a</sup>	37.99 <sup>ab</sup>	38.07 <sup>ab</sup>	1.042	<0.0001	36.66
	Thigh	42.90 <sup>b</sup>	54.69 <sup>a</sup>	43.54 <sup>b</sup>	42.25 <sup>b</sup>	45.34 <sup>b</sup>	0.721		
Ans	Breast	616.54 <sup>c</sup>	696.03 <sup>a</sup>	652.69 <sup>b</sup>	584.07 <sup>d</sup>	588.58 <sup>d</sup>	8.041	<0.0001	1,226.10
	Thigh	188.42 <sup>b</sup>	216.65 <sup>a</sup>	216.67 <sup>a</sup>	198.29 <sup>b</sup>	191.53 <sup>b</sup>	2.993		
Car	Breast	280.53 <sup>c</sup>	277.30 <sup>c</sup>	346.76 <sup>a</sup>	304.49 <sup>bc</sup>	328.57 <sup>ab</sup>	11.503	<0.0001	425.41
	Thigh	83.63 <sup>d</sup>	97.87 <sup>c</sup>	123.03 <sup>ab</sup>	115.83 <sup>b</sup>	128.74 <sup>a</sup>	2.793		
Cre	Breast	334.84 <sup>bc</sup>	335.32 <sup>b</sup>	357.16 <sup>a</sup>	321.91 <sup>c</sup>	333.46 <sup>bc</sup>	3.931	<0.0001	24.29
	Thigh	300.26 <sup>c</sup>	333.25 <sup>a</sup>	317.19 <sup>b</sup>	282.81 <sup>d</sup>	302.86 <sup>bc</sup>	4.690		
IMP	Breast	134.95 <sup>bc</sup>	135.96 <sup>bc</sup>	144.11 <sup>a</sup>	141.59 <sup>ab</sup>	133.04 <sup>c</sup>	2.461	<0.0001	292.49
	Thigh	73.27 <sup>d</sup>	66.08 <sup>c</sup>	86.20 <sup>b</sup>	79.90 <sup>c</sup>	98.59 <sup>a</sup>	1.118		

<sup>1)</sup> Asp, aspartic acid; Glu, glutamic acid; Ans, anserine; Car, carnosine; Cre, creatine; IMP, inosine 5'-monophosphate.

<sup>2)</sup> Standard error of the mean (n=15).

<sup>a-c</sup> Different letters in the same row indicate a significant difference (p<0.05).

enhancing the underlying umami taste of meat (Dashdorj et al., 2015; Lee et al., 2015). Creatine is one of the major metabolites produced during rigor mortis (Watabe et al., 1991) and plays a vital role in energy metabolism, with its concentration often being inversely proportional to meat quality (Jung et al., 2013). These bioactive compounds could be varied by the characteristics of breeds such as enzyme activities, resulting in different levels of bioactive compounds (Jung et al., 2013). Following death, adenosine 5'-triphosphate is rapidly degraded to adenosine 5'-monophosphate (AMP) resulting

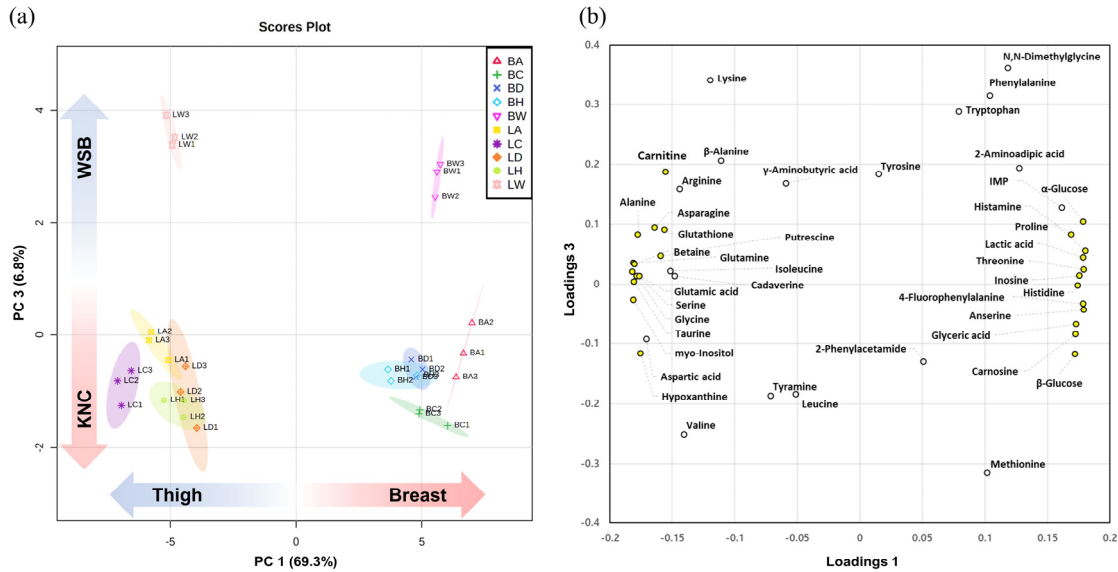
in energy depletion, and is then converted to IMP by AMP deaminase, thus increasing the umami flavor of the meat (Dashdorj et al., 2015). In previous studies, nucleotide levels was also proportional to bird's age (Jayasena et al., 2015b; Xiao et al., 2019). Therefore, KNC, which has relatively lower growth rate showed higher nucleotides levels than those of broilers (Kim et al., 2020b). In the present study, the breast meat of KNC-D and -H had higher IMP levels than WSB and other KNCs. However, that of thigh meat showed the highest in WSB, which need to investigate further. Newly developed KNC-D demonstrated an overall improvement in the concentration and composition of both taste-active and bioactive compounds in the breast meat when compared to commercial KNC-H and WSB breeds. Additionally, the aspartic acid, glutamic acid, anserine, and creatine content in the thigh meat was highest in KNC-C and lowest in KNC-H ( $p < 0.05$ ) (Table 1).

The aspartic acid and glutamic acid levels were lower in the breast meat samples compared to those in the thigh meat samples ( $p < 0.0001$ ; Table 1). However, the anserine, carnosine, creatine, and IMP contents were higher in the breast meat ( $p < 0.0001$ ). These results are consistent with those reported in previous studies that show that breast meat has higher carnosine content than thigh meat (Jung et al., 2013). The amount of carnosine can vary depending on the cut, sex, age, and breed of the meat evaluated (Jayasena et al., 2015a; Jung et al., 2013). Several previous studies have reported similar differences in the metabolites of these two meat portions (Jayasena et al., 2014a; Jayasena et al., 2015b; Jung et al., 2013). Breast meat primarily comprises type IIB muscle fibers (fast-twitch glycolytic white fiber) with relatively less type IIA fibers (fast-twitch oxidative glycolytic white fiber), while thigh meat contains high levels of type I (slow-twitch oxidative red fiber) and IIA fibers (Jaturasitha et al., 2008). Type II muscle is known to rely considerably on glycolytic metabolism for its energy supply because these muscles have fewer mitochondria than those observed in type I muscles (Booth and Thomason, 1991). This indicates that carnosine accumulation occurs more frequently in type I muscle fibers compared to that in type II muscle fibers (Jayasena et al., 2015b), thereby explaining the differences in its concentration in breast and thigh tissues. Taken together, these data suggest that KNC-D breast meat, which has more taste-active and bioactive compounds, is the best candidate to replace commercial KNC-H and WSB breeds for *Samgye*.

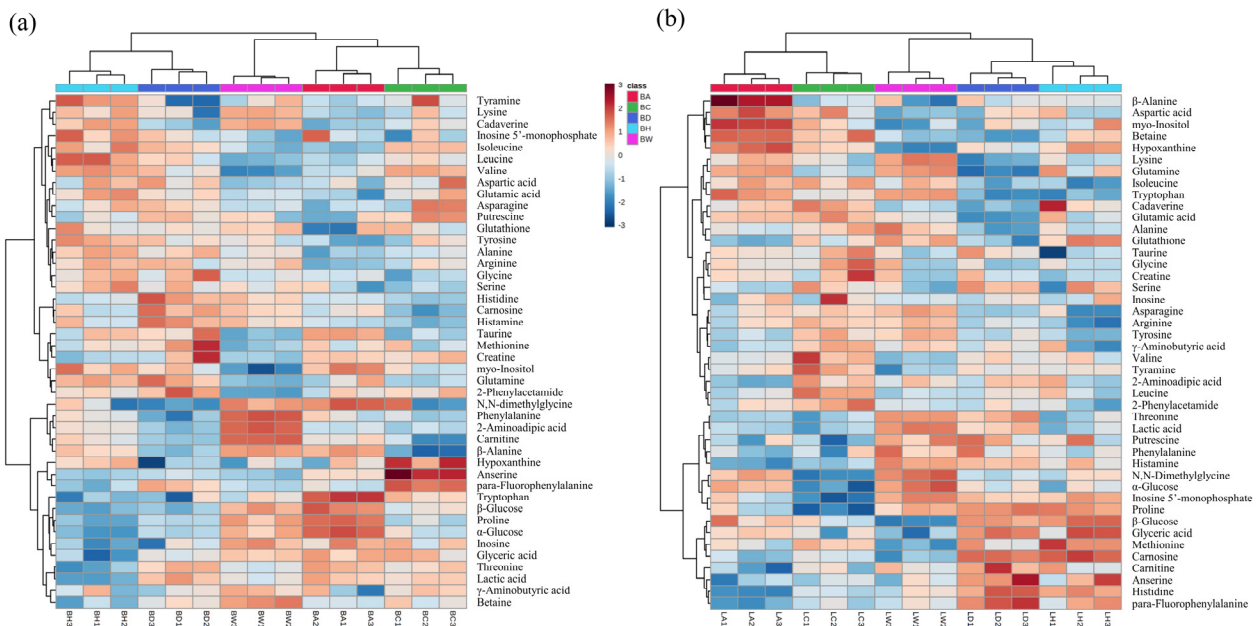
### Multivariate analysis

Multivariate analysis can easily identify the differences in the metabolic characteristics of different samples (Ergon, 2004). Our data were classified using PCA and PLS-DA (Fig. 2). The PCA score plots show that meat portion (breast and thigh) and breed (KNCs and WSB) can be clearly distinguished by PC 1 (69.3%) and PC 3 (6.8%), respectively (Fig. 2a). This was also true for the PLS-DA score plots where components 1 and 2 allowed for easy differentiation ( $R^2=0.945$ ;  $Q^2=0.901$ ; data not shown). Additionally, groups were easily distinguished by meat portion and breeds when using both the cumulative explained variation ( $R^2$ ) and predictive ability ( $Q^2$ ) values. Most of the metabolites (indicated by yellow dots; VIP scores  $> 1$ ) on the loading plots could be observed in one of two extremes in PC1, which indicated that more important variables correlated substantially with the meat portion rather than the breed. This may primarily be the result of the major metabolic differences between type I and type II muscle fibers and the distinct differences in their distribution between thigh and breast meat (Jayasena et al., 2015b; Jung et al., 2013).

Samples can be arranged in a clustered heatmap based on the similarities in their metabolic information (Škuta et al., 2014). Here, our clustered heatmap analysis (Fig. 3) showed that whole metabolic profiles could be used to indicate breed even following hierarchical analysis by meat portion. WSB samples were completely distinct from the KNC samples, suggesting that these chickens demonstrated a markedly different metabolism from the KNCs. Different meat types may have different metabolomes, resulting from different postmortem metabolic rates (Ryu and Kim, 2005), suggesting that this

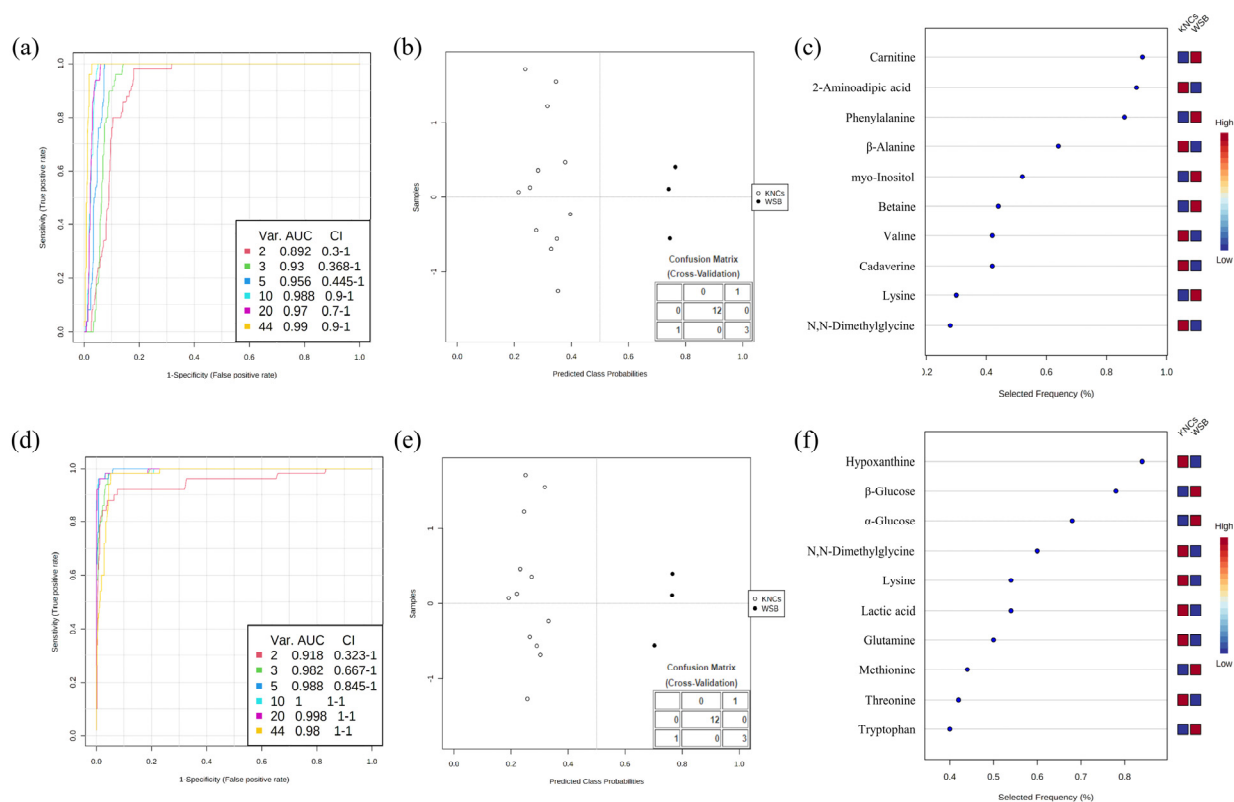


**Fig. 2.** (a) Principal component analysis (PCA) and (b) loading plots of partial least squares-discriminant analysis (PLS-DA) from quantified metabolites of whole chicken meat extracts using 2D NMR (heteronuclear single quantum coherence, HSQC) on 850 MHz cryo-NMR spectrometer. Highlighted variates (yellow dots) on loading plot mean variance importance on projection (VIP) score > 1. 2D NMR, two-dimensional nuclear magnetic resonance.



**Fig. 3.** Heatmap analysis based on the quantified metabolites from (a) breast and (b) thigh meat extracts using 2D NMR (heteronuclear single quantum coherence, HSQC) on 850 MHz cryo-NMR spectrometer. 2D NMR, two-dimensional nuclear magnetic resonance.

metabolic information may be used to differentiate meat samples for meat authenticity using machine learning algorithms, such as SVM and random forest classification, which can also be used to elucidate metabolic differences without performing quantitative analysis (Winning et al., 2008; Xia and Wishart, 2016). Based on the PCA and clustered heatmap analysis, multivariate ROC curve analysis was then used to validate the discriminatory value of these differences between KNCs and WSB in both meat types.



**Fig. 4.** Receiver operating characteristic curves (2 to 44 variables), class probabilities, and the most importance features from (a-c) breast and (d-f) thigh meat extracts using 2D NMR (heteronuclear single quantum coherence, HSQC) on 850 MHz cryo-NMR spectrometer. HSQC, heteronuclear single quantum coherence; 2D NMR, two-dimensional nuclear magnetic resonance.

Multivariate ROC curve analysis using linear SVM algorithms was evaluated for optimal model selection (Fig. 4), and the area under the ROC curve (AUC) was shown to be highest when the model used 10 features with good confidence interval values. This model demonstrated excellent overall discriminatory ability ( $>0.90$ ) in both breast and thigh meat (Muller et al., 2005). Additionally, this model did not exhibit class probability errors and every sample was correctly classified (type I and type II errors) in both meat types (Fig. 4b and 4e). The 10 features selected for the breast meat were carnitine, 2-aminoadipic acid, phenylalanine,  $\beta$ -alanine, myo-inositol, betaine, valine, cadaverine, lysine, and N,N-dimethylglycine (Table 2). Carnitine is synthesized from lysine and methionine (Kim et al., 2020b), and betaine is converted into dimethylglycine (Friesen et al., 2007). Likewise, other metabolic pathways may cause slight differences in the profiles of KNC and WSB breast meat.

N,N-dimethylglycine and lysine levels were lower in KNC thigh meat than those in WSB thigh meat (Table 2), while hypoxanthine content was higher in KNC samples compared to that in WSB samples, thereby presenting with lower IMP and rapid accumulation. In both the breast and thigh meat, WSB samples presented with higher amino acid content than the KNCs and this high concentration of free amino acids might be associated with the higher growth rate; this might promote faster muscle development in these chickens (Palma et al., 2016). Few ranked metabolites such as 2-aminoadipic acid and myo-inositol have rarely been reported in poultry meat. Additionally, metabolites undergo proteolytic enzyme cleavage and nucleotide degradation during the transition from muscle to meat and metabolic concentrations and end products can also change depending on the sex, species, and age (Jayasena et al., 2014b; Jung et al., 2013; Kim et al., 2020a; Ryu and Kim, 2005), suggesting that further analysis may be necessary to identify critical metabolic properties in these animals. However, despite this, our data were in agreement with those reported in previous studies which suggested that the combination of



**Table 2.** Selected ranked features of multivariate receiver operating characteristic (ROC) curve of breast meat from different Korean native chicken breeds (KNCs) compared with white semi-broiler (WSB)

Class	Compounds	t-tests	Log <sub>2</sub> fold change (KNCs/WSB)
Breast meat			
Amino acid	Carnitine	<0.001	-0.927
Amino acid	2-Aminoadipic acid	<0.001	-0.540
Amino acid	Phenylalanine	<0.001	-1.392
Amino acid	β-Alanine	<0.05	-1.024
Vitamin	myo-Inositol	<0.001	0.159
Amino acid	Betaine	<0.01	-0.277
Amino acid	Valine	<0.01	0.267
Alkylamines	Cadaverine	<0.05	-0.141
Amino acid	Lysine	<0.05	-0.158
Amino acid	N,N-Dimethylglycine	<0.05	-0.469
Thigh meat			
Nucleotide	Hypoxanthine	<0.001	0.579
Carbohydrates	β-Glucose	<0.001	0.467
Carbohydrates	α-Glucose	<0.001	-0.580
Amino acid	N,N-Dimethylglycine	<0.001	-0.464
Amino acid	Lysine	<0.001	-0.378
Organic acids	Lactic acid	<0.001	-0.222
Amino acid	Glutamine	<0.01	-0.189
Amino acid	Methionine	<0.01	0.953
Amino acid	Threonine	<0.01	-0.153
Amino acid	Tryptophan	<0.01	-2.148

qNMR and multivariate analysis could elucidate metabolic characteristics of samples in the absence of numerical quantification (Kim et al., 2020a; Kim et al., 2020b; Winning et al., 2008).

## Conclusions

Our results show that newly developed KNC-D chickens present with higher anserine, creatine, carnosine, and IMP contents in the breast tissues than those observed in the commercial KNC and WSB chicken breeds. Meat portion and breed were also clearly distinguishable using PCA and hierarchical analysis based on the 2D HSQC analysis. Moreover, ROC analysis was useful for distinguishing between different breeds. Based on these results, we suggest that a metabolomics approach to identify breeds based on 2D HSQC analysis demonstrates superior performance to the conventional quality assessment tools and can differentiate between breeds and samples when used as part of a multivariate analysis. However, further analysis is warranted to determine the exact biomarker necessary to distinguish between each breed.

## Conflicts of Interest

The authors declare no potential conflicts of interest.

## Acknowledgements

This research was supported by Golden Seed Project (No. 213010-05-4-SB410, PJ 01282201), Ministry of Agriculture, Food and Rural Affairs (MAFRA), Ministry of Oceans and Fisheries (MOF), Rural Development Administration (RDA) and Korea Forest Services (KFS). This work was also supported by the BK21 Four Program, Seoul National University, Seoul, Korea.

## Author Contributions

Conceptualization: Kim HC, Jo C. Data curation: Kim HC. Formal analysis: Kim HC, Kim JW, Lee D. Methodology: Kim HC, Jo C. Software: Kim HC, Kim JW, Lee D. Validation: Kim HC. Investigation: Kim HC, Jo C. Writing - original draft: Kim HC, Yim DG. Writing - review & editing: Kim HC, Yim DG, Kim JW, Lee D, Jo C.

## Ethics Approval

This article does not require IRB/IACUC approval because there are no human and animal participants.

## References

- Ali M, Lee SY, Park JY, Jung S, Jo C, Nam KC. 2019. Comparison of functional compounds and micronutrients of chicken breast meat by breeds. *Food Sci Anim Resour* 39:632-642.
- Beauclercq S, Nadal-Desbarats L, Hennequet-Antier C, Collin A, Tesseraud S, Bourin M, Le Bihan-Duval E, Berri C. 2016. Serum and muscle metabolomics for the prediction of ultimate pH, a key factor for chicken-meat quality. *J Proteome Res* 15:1168-1178.
- Booth FW, Thomason DB. 1991. Molecular and cellular adaptation of muscle in response to exercise: Perspectives of various models. *Physiol Rev* 71:541-585.
- Cho JH, Um JS, Yu MS, Paik IK. 2007. Effect of ME and crude protein content of diet on the performance and production cost of white semibroiler chickens. *Korean J Poult Sci* 34:53-56.
- Dashdorj D, Amna T, Hwang I. 2015. Influence of specific taste-active components on meat flavor as affected by intrinsic and extrinsic factors: An overview. *Eur Food Res Technol* 241:157-171.
- Dass R, Grudziąż K, Ishikawa T, Nowakowski M, Dębowska R, Kazimierczuk K. 2017. Fast 2D NMR spectroscopy for *in vivo* monitoring of bacterial metabolism in complex mixtures. *Front Microbiol* 8:1306.
- Ergon R. 2004. Informative PLS score-loading plots for process understanding and monitoring. *J Process Control* 14:889-897.
- Friesen RW, Novak EM, Hasman D, Innis SM. 2007. Relationship of dimethylglycine, choline, and betaine with oxoproline in plasma of pregnant women and their newborn infants. *J Nutr* 137:2641-2646.

- Jaturasitha S, Srikanthai T, Kreuzer M, Wicke M. 2008. Differences in carcass and meat characteristics between chicken indigenous to northern Thailand (Black-boned and Thai native) and imported extensive breeds (Bresse and Rhode Island Red). *Poult Sci* 87:160-169.
- Jayasena DD, Jung S, Bae YS, Kim SH, Lee SK, Lee JH, Jo C. 2014a. Changes in endogenous bioactive compounds of Korean native chicken meat at different ages and during cooking. *Poult Sci* 93:1842-1849.
- Jayasena DD, Jung S, Kim HJ, Alahakoon AU, Nam KC, Jo C. 2014b. Effect of sex on flavor-related and functional compounds in freeze-dried broth made from Korean native chicken. *Korean J Food Sci Anim Resour* 34:448-456.
- Jayasena DD, Jung S, Kim HJ, Bae YS, Yong HI, Lee JH, Kim JG, Jo C. 2013. Comparison of quality traits of meat from Korean native chickens and broilers used in two different traditional Korean cuisines. *Asian-Australas J Anim Sci* 26:1038-1046.
- Jayasena DD, Jung S, Kim HJ, Yong HI, Nam KC, Jo C. 2015a. Taste-active compound levels in Korean native chicken meat: The effects of bird age and the cooking process. *Poult Sci* 94:1964-1972.
- Jayasena DD, Jung S, Kim SH, Kim HJ, Alahakoon AU, Lee JH, Jo C. 2015b. Endogenous functional compounds in Korean native chicken meat are dependent on sex, thermal processing and meat cut. *J Sci Food Agr* 95:771-775.
- Jeon HJ, Choe JH, Jung YK, Kruk ZA, Lim DG, Jo CR. 2010. Comparison of the chemical composition, textural characteristics, and sensory properties of North and South Korean native chickens and commercial broilers. *Korean J Food Sci Anim Resour* 30:171-178.
- Jeong HS, Utama DT, Kim J, Barido FH, Lee SK. 2020. Quality comparison of retorted Samgyetang made from white semi-broilers, commercial broilers, Korean native chickens, and old laying hens. *Asian-Australas J Anim Sci* 33:139-147.
- Jiménez-Carvelo AM, González-Casado A, Bagur-González MG, Cuadros-Rodríguez L. 2019. Alternative data mining/machine learning methods for the analytical evaluation of food quality and authenticity: A review *Food Res Int* 122:25-39.
- Jung S, Bae YS, Kim HJ, Jayasena DD, Lee JH, Park HB, Heo KN, Jo C. 2013. Carnosine, anserine, creatine, and inosine 5'-monophosphate contents in breast and thigh meats from 5 lines of Korean native chicken. *Poult Sci* 92:3275-3282.
- Jung Y, Lee J, Kwon J, Lee KS, Ryu DH, Hwang GS. 2010. Discrimination of the geographical origin of beef by <sup>1</sup>H NMR-based metabolomics. *J Agric Food Chem* 58:10458-10466.
- Kim HC, Baek KH, Ko YJ, Lee HJ, Yim DG, Jo C. 2020a. Characteristic metabolic changes of the crust from dry-aged beef using 2D NMR spectroscopy. *Molecules* 25:3087.
- Kim HC, Ko YJ, Jo C. 2020b. Potential of 2D qNMR spectroscopy for distinguishing chicken breeds based on the metabolic differences. *Food Chem* 342:128316.
- Kim HC, Ko YJ, Kim M, Choe J, Yong HI, Jo C. 2019. Optimization of 1D <sup>1</sup>H quantitative NMR (Nuclear Magnetic Resonance) conditions for polar metabolites in meat. *Food Sci Anim Resour* 39:1-12.
- Kodani Y, Miyakawa T, Komatsu T, Tanokura M. 2017. NMR-based metabolomics for simultaneously evaluating multiple determinants of primary beef quality in Japanese black cattle. *Sci Rep* 7:1297.
- Lee HJ, Jayasena DD, Kim SH, Kim HJ, Heo KN, Song JE, Jo C. 2015. Comparison of bioactive compounds and quality traits of breast meat from Korean native ducks and commercial ducks. *Korean J Food Sci Anim Resour* 35:114-120.
- Lee SY, Park JY, Hyun JM, Jung S, Jo C, Nam KC. 2018. Comparative analysis of meat quality traits of new strains of native chickens for Samgyetang. *Korean J Poult Sci* 45:175-182.
- Muller MP, Tomlinson G, Marrie TJ, Tang P, McGeer A, Low DE, Detsky AS, Gold WL. 2005. Can routine laboratory tests

- discriminate between severe acute respiratory syndrome and other causes of community-acquired pneumonia? Clin Infect Dis 40:1079-1086.
- Palma M, Scanlon T, Kilminster T, Milton J, Oldham C, Greeff J, Matzapetakis M, Almeida AM. 2016. The hepatic and skeletal muscle ovine metabolomes as affected by weight loss: A study in three sheep breeds using NMR-metabolomics. Sci Rep 6:39120.
- Park MN, Hong EC, Kang BS, Hwangbo J, Kim HK. 2011. Performance and meat quality of three-crossbreed Korean native chickens (KNC). Korean J Poult Sci 38:293-304.
- Ryu YC, Kim BC. 2005. The relationship between muscle fiber characteristics, postmortem metabolic rate, and meat quality of pig *longissimus dorsi* muscle. Meat Sci 71:351-357.
- Simmler C, Napolitano JG, McAlpine JB, Chen SN, Pauli GF. 2014. Universal quantitative NMR analysis of complex natural samples. Curr Opin Biotech 25:51-59.
- Škuta C, Bartůněk P, Svozil D. 2014. InChIlib: Interactive cluster heatmap for web applications. J Cheminformatics 6:1-9.
- Straadt IK, Aaslyng MD, Bertram HC. 2014. An NMR-based metabolomics study of pork from different crossbreeds and relation to sensory perception. Meat Sci 96:719-728.
- Watabe S, Kamal M, Hashimoto K. 1991. Postmortem changes in ATP, creatine phosphate, and lactate in sardine muscle. J Food Sci 56:151-153.
- Winning H, Larsen FH, Bro R, Engelsen SB. 2008. Quantitative analysis of NMR spectra with chemometrics. J Magn Reson 190:26-32.
- Xia J, Wishart DS. 2016. Using MetaboAnalyst 3.0 for comprehensive metabolomics data analysis. Curr Protoc Bioinformatics 55:14.10.
- Xiao Z, Ge C, Zhou G, Zhang W, Liao G. 2019. <sup>1</sup>H NMR-based metabolic characterization of Chinese Wuding chicken meat. Food Chem 274:574-582.
- Yamaguchi S. 1967. The synergistic taste effect of monosodium glutamate and disodium 5'-inosinate. J Food Sci 32:473-478.