

## SHORT COMMUNICATION

# Rapid Detection of *Escherichia coli* in Fresh Foods Using a Combination of Enrichment and PCR Analysis

Yukyung Choi<sup>1,2</sup>, Sujung Lee<sup>1,2</sup>, Heeyoung Lee<sup>1,2</sup>, Soomin Lee<sup>1,2</sup>, Sejeong Kim<sup>1,2</sup>, Jeeyeon Lee<sup>1,2</sup>, Jimyeong Ha<sup>1,2</sup>, Hyemin Oh<sup>1,2</sup>, Yewon Lee<sup>1,2</sup>, Yujin Kim<sup>1,2</sup>, and Yohan Yoon<sup>1,2,\*</sup>

<sup>1</sup>Department of Food and Nutrition, Sookmyung Women's University, Seoul 04310, Korea

<sup>2</sup>Risk Analysis Research Center, Sookmyung Women's University, Seoul 04310, Korea



OPEN ACCESS

Received May 1, 2018

Revised July 15, 2018

Accepted July 22, 2018

\*Corresponding author : Yohan Yoon  
Department of Food and Nutrition,  
Sookmyung Women's University, Seoul  
04310, Korea  
Tel: +82-2-2077-7585  
Fax: +82-2-710-9479,  
E-mail: [yoon@sookmyung.ac.kr](mailto:yoon@sookmyung.ac.kr)

**Abstract** The objective of this study was to determine the minimum enrichment time for different types of food matrix (pork, beef, and fresh-cut lettuce) in an effort to improve *Escherichia coli* detection efficiency. Fresh pork (20 g), beef (20 g), and fresh-cut lettuce (20 g) were inoculated at 1, 2, and 3 Log CFU/g of *Escherichia coli*. Samples were enriched in filter bags for 3 or 5 h at 44.5°C, depending on sample type. *E. coli* cell counts in the samples were enriched in *E. coli* (EC) broth at 3 or 5 h. One milliliter of the enriched culture medium was used for DNA extraction, and PCR assays were performed using primers specific for *uidA* gene. To detect *E. coli* (*uidA*) in the samples, a 3–4 Log CFU/mL cell concentration was required. However, *E. coli* was detected at 1 Log CFU/g in fresh pork, beef, and fresh-cut lettuce after 5, 5, and 3-h enrichment, respectively. In conclusion, 5-h enrichment for fresh meats and 3-h enrichment for fresh-cut lettuce in EC broth at 44.5°C, and PCR analysis using *uidA* gene-specific primers were appropriate to detect *E. coli* rapidly in food samples.

**Keywords** fresh meat, fresh-cut lettuce, *Escherichia coli*, enrichment, PCR

## Introduction

Food hygiene and safety are a major concern in the food industry, and microbiological safety is a particular problem. *Escherichia coli* can act as an indicator for the presence of other pathogenic bacteria, and it is detected easily in foods such as pork, beef, and chicken. Thus, *E. coli* detection in foods is one of the most useful hygienic criteria (Scheinberg et al., 2017; Seo et al., 2010; Simancas et al., 2016). However, at present the conventional method for *E. coli* detection requires several days (Feng et al., 2002; Stromberg et al., 2015; Wang and Salazar, 2016), especially in cases where *E. coli* concentrations are low. Enrichment is a commonly used method for bacterial isolation to

increase the cell counts of target bacteria above other background flora prior to identification (Gracias and McKillip, 2004). According to FDA-BAM (U.S. Food and Drug Administration-bacteriological analytical manual) and other reports, *E. coli* can be enriched with *E. coli* (EC) broth or modified tryptic soy broth (mTSB); however, the enrichment methods are time-consuming (Feng et al., 2002; Stromberg et al., 2015).

Polymerase chain reaction (PCR), using primers against the *uidA* gene that encodes beta-D-glucuronidase can be used to identify *E. coli* accurately (Molina et al., 2015). PCR detection method has been used to identify a colony on an agar plate, which was formed by plating at least 24-h enriched broth. However, applying PCR detection method directly to the enriched samples has not been evaluated yet. In addition, there is an issue of specificity, since *uidA* gene is also present in *Shigella* (Frampton and Restaino, 1993). The objective of the present study was therefore to develop a rapid detection method for *E. coli* in food samples, using a combination of enrichment and PCR that can also differentiate *E. coli* from *Shigella*.

## Materials and Methods

### Bacterial preparation and determination of detection limit

Five *E. coli* strains (*E. coli* NCCP11142, *E. coli* NCCP14037, *E. coli* NCCP14038, *E. coli* NCCP14039, and *E. coli* NCCP15661), and *Shigella sonnei* NCCP14743 strain were cultured in 10 mL tryptic soy broth (TSB, Becton, Dickinson and Company, USA). One-hundred microliter aliquots were transferred to fresh 10 mL TSB, followed by incubation at 37°C for 24 h. The cultures of the five *E. coli* strains were mixed. Twenty-five milliliters of the *E. coli* mixture and 10 mL *S. sonnei* were centrifuged at 1,912 *g* and 4°C for 15 min, and the pellets were washed twice with the same volume of phosphate-buffered saline (PBS; 0.2 g KH<sub>2</sub>PO<sub>4</sub>, 1.5 g Na<sub>2</sub>HPO<sub>4</sub>, 8.0 g NaCl, and 0.2 g KCl in 1 L distilled H<sub>2</sub>O [pH 7.4]). The suspension was diluted with PBS to obtain 3, 4, and 5 Log CFU/mL of inocula, and *E. coli* and *S. sonnei* were assayed by PCR to determine the detection limit.

### Food sample preparation and inoculation

Ham of pork and round of beef were purchased from a butcher shop, and a fresh-cut lettuce was purchased from a supermarket, located in Seoul, South Korea. Ham of pork and round of beef were cut into 20-g portions with a flame-sterilized knife. Fresh pork (20 g, n=4), beef (20 g, n=4), and fresh-cut lettuce (20 g, n=4) were placed aseptically into separate filter bags (3M, St. Paul, MN, USA). *E. coli* inoculum (0.1 mL) was inoculated onto the surface of the food samples to achieve 1, 2 and 3 Log CFU/g, and samples were massaged 20 times by hand. Samples were then left at room temperature (25°C) for 15 min to allow cell attachment.

### *E. coli* enrichment in food samples

Eighty milliliters of EC broth (BD, USA) were placed into the filter bags, and shaken by hand 30 times. All samples were incubated at 44.5°C (Feng et al., 2002) for 0, 4, and 5 h for pork and beef, or 0 and 3, 6, 12 h for fresh-cut lettuce. After enrichment, 1-mL aliquots of the enriched samples were plated onto *E. coli*/coliform petrifilm (3M, USA) to quantify *E. coli*. The plates were incubated at 37°C for 24 h, and colonies were manually counted.

### DNA extraction

One-milliliter aliquots of inocula and enriched samples were centrifuged at 18,341×*g* at 4°C for 5 min, and supernatants

were discarded. Cell pellets were resuspended in 30 µL distilled water and boiled at 100°C for 10 min, and the suspensions were centrifuged at 18,341×g and 4°C for 3 min. The supernatants were then used for PCR analysis.

### PCR analysis

Primers targeting the *uidA* and *Shigella* identification gene were used to differentiate *E. coli* from *Shigella* (Table 1). PCR conditions were as follows: 94°C for 2 min (initial denaturation), 94°C for 20 s (denaturation), 72°C for 20 s (extension), and 72°C for 2 min (final extension). Annealing was performed at 53°C for *uidA* or at 62°C for the *Shigella* identification gene for 10 s, and 35 cycles were performed. PCR analysis was performed using Fast mix French PCR (i-Taq) (iNtRon Biotechnology, Gyeonggi-do, Korea), and PCR products were run on an agarose gel (1.5%) with electrophoresis for 20 min. Target bands were visualized under UV light.

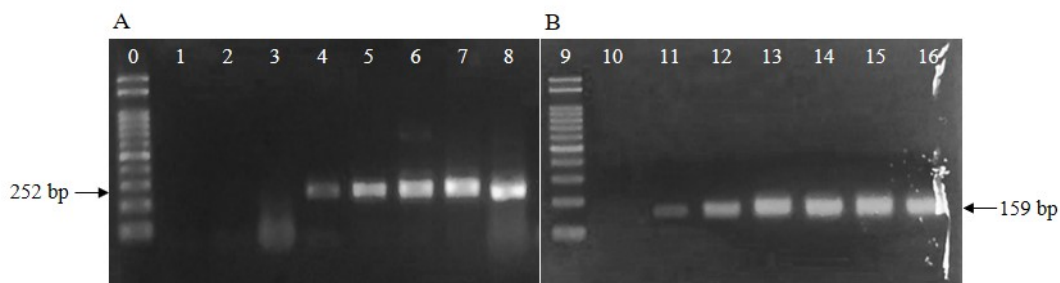
## Results and Discussion

Minimum cell counts for PCR analysis, using primers for *uidA* gene were 3–4 Log CFU/mL for *E. coli* and 3 Log CFU/mL for *Shigella* (Fig. 1). From this result, we confirmed that 3–4 Log CFU/mL of bacterial cell counts was required to detect *E. coli* with primers targeting *uidA* gene, and the primers can detect both *E. coli* and *Shigella*. Hence, additional primers were necessary to differentiate *E. coli* from *Shigella*. Subsequently, the *Shigella* identification primers described in Table 1 were used, and the *Shigella* identification primers differentiated *E. coli* from *Shigella* (Fig. 1).

Analysis was then performed to determine optimum enrichment times required to obtain 3–4 Log CFU/mL of *E. coli* for PCR analysis. *E. coli* was inoculated into fresh pork, beef, or fresh-cut lettuce at 1, 2, and 3 Log CFU/g. *E. coli* in the pork and beef were enriched for 4 and 5 h, and *E. coli* in the fresh-cut lettuce were enriched for 3, 6 and 12 h. After 5-h enrichment, *E. coli* cell counts in the pork and beef increased to 5.9–6.0, 7.1, and 8.0–8.5 Log CFU/g for 1, 2, and 3-Log CFU/g inoculation levels, respectively, and *uidA* gene expression could be detected at all cell concentrations (Table 2, Fig. 2). In

**Table 1. Primers for polymerase chain reaction (PCR) analysis**

Bacteria	Target gene	Size (bp)	Primer sequence (5'-3')	Reference
<i>Escherichia coli</i>	<i>uidA</i>	252	PT-2, GCGAAAAGTGTGGAATTGGG PT-3, TGATGCTCCATAACTTCCTG	Cebula et al. (1995)
<i>Shigella</i>	<i>Shigella</i> identification gene	159	F255, TCGCATTCTCTCCCCACCACG F413, CCGGATGTGTCTCGGGCAATC	Kim et al. (2017)

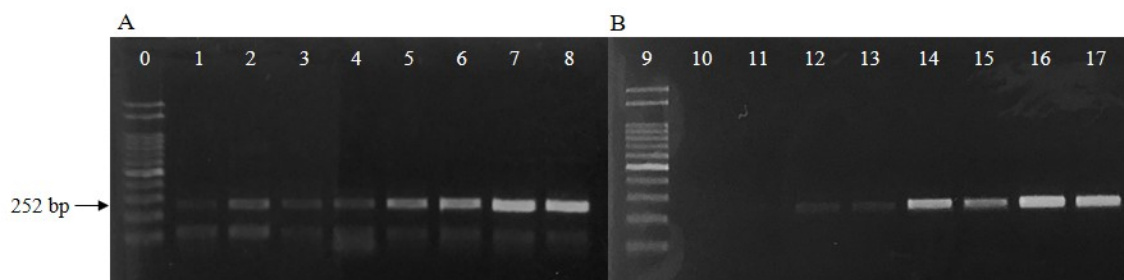


**Fig. 1. Detection of *Escherichia coli* (A, *uidA* without enrichment; lanes 1–8) and *Shigella* (B, *Shigella* identification gene without enrichment; lanes 10–16) by PCR. Lanes 0 and 9: 100-bp ladder; lane 1: 1 Log CFU/mL cell counts; lanes 2 and 10: 2 Log CFU/mL cell counts; lanes 3 and 11: 3 Log CFU/mL cell counts; lanes 4 and 12: 4 Log CFU/mL cell counts; lanes 5 and 13: 5 Log CFU/mL cell counts; lanes 6 and 14: 6 Log CFU/mL cell counts; lanes 7 and 15: 7 Log CFU/mL cell counts; lanes 8 and 16: 8 Log CFU/mL cell counts.**

**Table 2.** *Escherichia coli* cell counts (Log CFU/g, mean±SD) in fresh meats (pork and beef) and fresh-cut lettuce after 0, 4, and 5 h- and 0, 3, 6, and 12 h-enrichment with *E. coli* (EC) broth

Food matrix	Targeted <i>E. coli</i> cell counts (Log CFU/g)	Enrichment time (h)					
		0	3	4	5	6	12
Pork	1	0.7±0.0	- <sup>1)</sup>	4.7±0.0	5.9±0.5	-	-
	2	1.5±0.0	-	5.8±0.0	7.1±0.4	-	-
	3	3.1±0.0	-	6.9±0.0	8.5±0.1	-	-
Beef	1	0.8±0.2	-	4.4±0.6	6.0±0.6	-	-
	2	1.5±0.2	-	6.1±0.1	7.1±0.6	-	-
	3	3.0±0.0	-	7.3±0.1	8.0±0.2	-	-
Fresh-cut lettuce	1	1.0±0.2	4.2±0.2	-	-	6.3±0.0	7.2±0.0
	2	1.7±0.2	5.5±0.2	-	-	8.3±0.0	9.0±0.0
	3	3.1±0.2	6.5±0.1	-	-	8.4±0.0	8.0±0.0

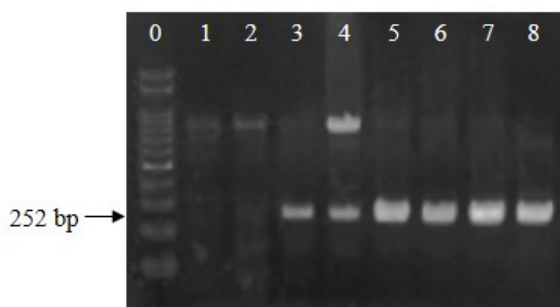
<sup>1)</sup> Not applied.



**Fig. 2.** Detection of *Escherichia coli* in fresh pork (A) and beef (B) samples by PCR for *uidA* after 5-h enrichment with *E. coli* (EC) broth. Lanes 0 and 9: 100-bp ladder; lanes 1, 2, 10, and 11: non-inoculated samples; lanes 3, 4, 12, and 13: 1-Log CFU/g inoculated samples; lanes 5, 6, 14, and 15: 2-Log CFU/g inoculated samples; lanes 7, 8, 16, and 17: 3-Log CFU/g inoculated samples.

fresh-cut lettuce after 3-h enrichment, the bacterial cell counts increased to 4.2, 5.5, and 6.5 Log CFU/g for 1, 2, and 3-Log CFU/g inoculation levels, respectively, and *uidA* gene was positive for all samples (Table 2, Fig. 3). Thus, the optimal enrichment time for PCR detection of *E. coli* was 5 h for fresh pork and beef, and 3 h for fresh-cut lettuce.

The above results show that meat samples require a longer enrichment time than fresh-cut lettuce. Low *E. coli* concentrations (0.7–0.8 Log CFU/g) in pork and beef increased to 4.4–4.7 Log CFU/g after 4-h enrichment, and the samples were



**Fig. 3.** Detection of *Escherichia coli* in fresh-cut lettuce samples by PCR for *uidA* after 3-h enrichment with *E. coli* (EC) broth. Lane 0: 100-bp ladder; lanes 1 and 2: non-inoculated samples; lanes 3 and 4: 1-Log CFU/g inoculated samples; lanes 5 and 6: 2-Log CFU/g inoculated samples; lanes 7 and 8: 3-Log CFU/g inoculated samples.

negative for *uidA* expression (Table 2). However, at similar *E. coli* concentrations in fresh-cut lettuce, the samples were *uidA* positive. It is possible that a component of the meat samples is interfering with the PCR analysis. Wang and Salazar (2016) showed that a number of intrinsic factors can interfere with PCR assays, and other studies have shown that particulates such as fats and carbohydrates can affect nucleic acid amplification (Dwivedi and Jaykus, 2011; Thomas et al., 1991). For this reason, extra pre-treatment, such as centrifugation and bead-based techniques, are necessary to remove some particles from certain foods (Rossen et al., 1992; Yang et al., 2007). Heidenreich et al. (2010) detected *E. coli* in ground beef using an electrochemical biochip method after enrichment for 4–5 h, and Li et al. (2017) used propidium monoazide treatment to detect viable cell counts of *E. coli* O157:H7 at 12-h enrichment. However, in this present study, 5-h enrichment for fresh meat samples and 3-h enrichment for fresh-cut lettuce were sufficient to detect *E. coli* by PCR.

In conclusion, the combination of enrichment and PCR detection method is able to detect *E. coli* via applying PCR with *uidA* primers to samples directly after 5-h enrichment for fresh meats (pork and beef) and 3-h enrichment for fresh-cut lettuce.

## Acknowledgements

This work was supported by the “Cooperative Research Program for Agriculture Science & Technology Development (Project No. PJ01193002)” Rural Development Administration, Korea.

## References

- Cebula TA, Payne WL, Feng P. 1995. Simultaneous identification of strains of *Escherichia coli* serotype O157:H7 and their Shiga-like toxin type by mismatch amplification mutation assay-multiplex PCR. *J Clin Microbiol* 33:248-250.
- Dwivedi HP, Jaykus LA. 2011. Detection of pathogens in foods: The current state-of-the-art and future directions. *Crit Rev Microbiol* 37:40-63.
- Feng P, Stephen D, Weagant SD, Grant GA, Burkhardt W. 2002. Food Drug Administration (FDA)-Bacteriological Analytical Manual (BAM) chapter 4: Enumeration of *Escherichia coli* and the coliform bacteria. Available from: <https://www.fda.gov/Food/FoodScienceResearch/LaboratoryMethods/ucm064948.htm>. Accessed at Mar 4, 2018.
- Frampton EW, Restaino L. 1993. Methods for *Escherichia coli* identification in food, water and clinical samples based on beta-glucuronidase detection. *J Appl Microbiol* 74:223-233.
- Gracias KS, McKillip JL. 2004. A review of conventional detection and enumeration methods for pathogenic bacteria in food. *Can J Microbiol* 50:883-890.
- Heidenreich B, Poehlmann C, Sprinzl M, Gareis M. 2010. Detection of *Escherichia coli* in meat with an electrochemical biochip. *J Food Prot* 73:2025-2033.
- Kim HJ, Ryu JO, Song JY, Kim HY. 2017. Multiplex polymerase chain reaction for identification of Shigellae and four *Shigella* species using novel genetic markers screened by comparative genomics. *Foodborne Pathog Dis* 14:400-406.
- Li F, Li B, Dang H, Kang Q, Yang L, Wang Y, Aguilar ZP, Lai W, Xu H. 2017. Viable pathogens detection in fresh vegetables by quadruplex PCR. *LWT Food Sci Technol* 81:306-313.
- Molina F, López-Acedo E, Tabla R, Roa I, Gómez A, Rebollo JE. 2015. Improved detection of *Escherichia coli* and coliform bacteria by multiplex PCR. *BMC Biotechnol* 15:48.
- Rossen L, Nørskov P, Holmstrøm K, Rasmussen OF. 1992. Inhibition of PCR by components of food samples, microbial diagnostic assays and DNA-extraction solutions. *Int J Food Microbiol* 17:37-45.

- Scheinberg JA, Dudley EG, Campbell J, Roberts B, DiMarzio M, DebRoy C, Cutter CN. 2017. Prevalence and phylogenetic characterization of *Escherichia coli* and hygiene indicator bacteria isolated from leafy green produce, beef, and pork obtained from farmers' markets in Pennsylvania. *J Food Prot* 80:237-244.
- Seo YH, Jang JH, Moon KD. 2010. Microbial evaluation of minimally processed vegetables and sprouts produced in Seoul, Korea. *Food Sci Biotechnol* 19:1283-1288.
- Simancas A, Molina F, Tabla R, Roa I, Rebollo JE. 2016. *YaiO*, a new target for highly specific detection of *Escherichia coli* by PCR amplification. In *Microbes in the spotlight: Recent progress in the understanding of beneficial and harmful microorganisms*. Méndez-Vilas A (ed). Brown Walker Press, Boca Raton, FL, USA. p 234.
- Stromberg ZR, Lewis GL, Marx DB, Moxley RA. 2015. Comparison of enrichment broths for supporting growth of Shiga toxin-producing *Escherichia coli*. *Curr Microbiol* 71:214-219.
- Thomas EJ, King RK, Burchak JACK, Gannon VP. 1991. Sensitive and specific detection of *Listeria monocytogenes* in milk and ground beef with the polymerase chain reaction. *Appl Environ Microbiol* 57:2576-2580.
- Wang Y, Salazar JK. 2016. Culture-independent rapid detection methods for bacterial pathogens and toxins in food matrices. *Compr Rev Food Sci Food Saf* 15:183-205.
- Yang H, Qu L, Wimbrow AN, Jiang X, Sun Y. 2007. Rapid detection of *Listeria monocytogenes* by nanoparticle-based immunomagnetic separation and real-time PCR. *Int J Food Microbiol* 118:132-138.